



2023 Pennsauken Leaf Collection Program

Part 1: Leaf Collection Guidelines

Part 2: Leaf Collection Schedule

Part 3: Leaf Collection Maps

Part 1: Leaf Collection Guidelines:

There are two (2) options for disposing of leaves in Pennsauken.

Option #1: Place Leaves in Cans or Bags out for Yard Debris Collection

1. Place cans or bags curbside by 6:00am Wednesday.
2. Do not place leaves, grass or vegetative waste with regular garbage or recycling.
3. The Wednesday Yard Debris collection occurs each week throughout the year.

Option #2: Place Leaves Curbside in Front of Your Home

1. Place leaves curbside on *the weekend prior* to the scheduled collection week for your section
2. Do not place leaves in the street, leave them at the curb.
3. NJ-DEP regulations restrict leaves from being placed within 10 feet of any storm drains.
4. Leaves will be collected by the leaf vacuum machine according to the posted schedule.
5. Signs will be posted around the sections where collection is starting the following week.
6. A schedule will be available in All Around Pennsauken, on the Township's Website (www.Pennsauken.gov) and social media accounts and on the Public Works Facebook page.
7. Due to the unpredictability of the weather, Public Works cannot guarantee any additional passes once your street has been vacuumed.
8. Leaf piles with branches or other debris mixed in will not be collected.

Please be aware that rain can slow down the collection process. Any alterations to the schedule for unforeseen events will be promptly posted via the Township's website and Social Media accounts.

A six (6) week collection program has been designed to ensure that each section of Pennsauken receives at least two passes of curbside leaf collection. The Weekly Wednesday Yard Debris collection is always available for bagged/canned leaves.

Leaves placed at the curb after DPW crews have passed will not be collected until the second pass.

Leaves placed at the curb after the second scheduled pass will be required to be bagged for the normal Wednesday yard debris collection.



Part 2: Leaf Collection Schedule:

The Town has been divided into three (3) sections, using the existing garbage day routes. Your Garbage Collection Day determines which Leaf Collection Section you are in.

If your normal garbage collection day is Friday, then you are in the **Blue Section**.

If your normal garbage collection day is Tuesday, then you are in the **Red Section**.

If your normal garbage collection day is Monday or Thursday, then you are in the **Gold Section**.

Leaf Collection **Blue Section**: Friday's Garbage Collection Route

Leaf Collection **Red Section**: Tuesday's Garbage Collection Route

Leaf Collection **Gold Section**: Monday and Thursday's Garbage Collection Route

2023 Curbside Leaf Collection Schedule:

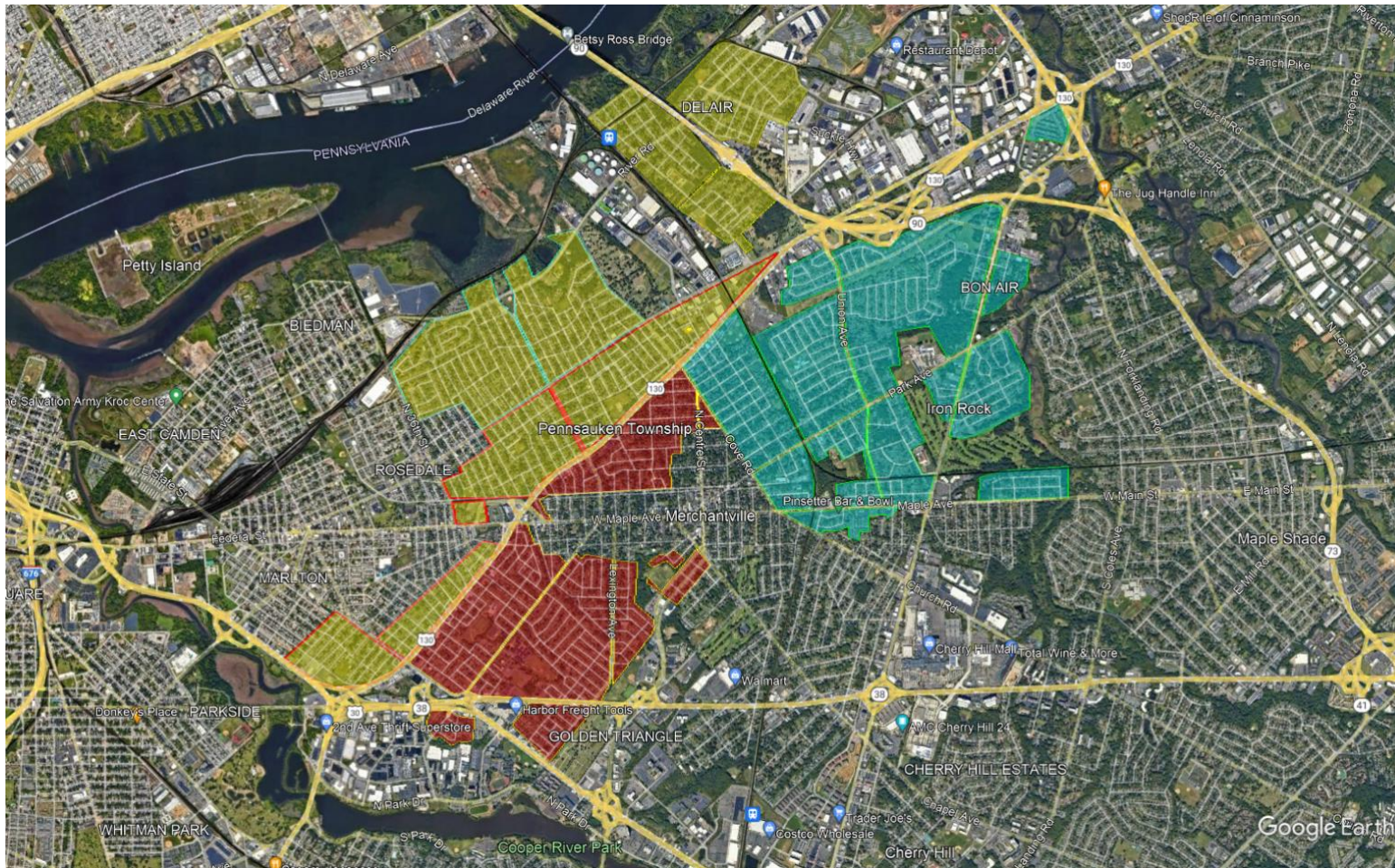
Work Week:	Section:	Pile Ready Date:	Collection Pass #:
Week of 11/06/23:	Blue Section	Leaves to curb by 11/05/23	Collection #1
Week of 11/13/23:	Red Section	Leaves to curb by 11/12/23	Collection #1
Week of 11/20/23:	Gold Section	Leaves to curb by 11/19/23	Collection #1
Week of 11/27/23:	Blue Section	Leaves to curb by 11/26/23	Collection #2
Week of 12/04/23:	Red Section	Leaves to curb by 12/03/23	Collection #2
Week of 12/11/23:	Gold Section	Leaves to curb by 12/10/23	Collection #2



Pennsauken
PUBLICWORKS
DEPARTMENT

Part 3: Leaf Collection Section Maps:

Route 130



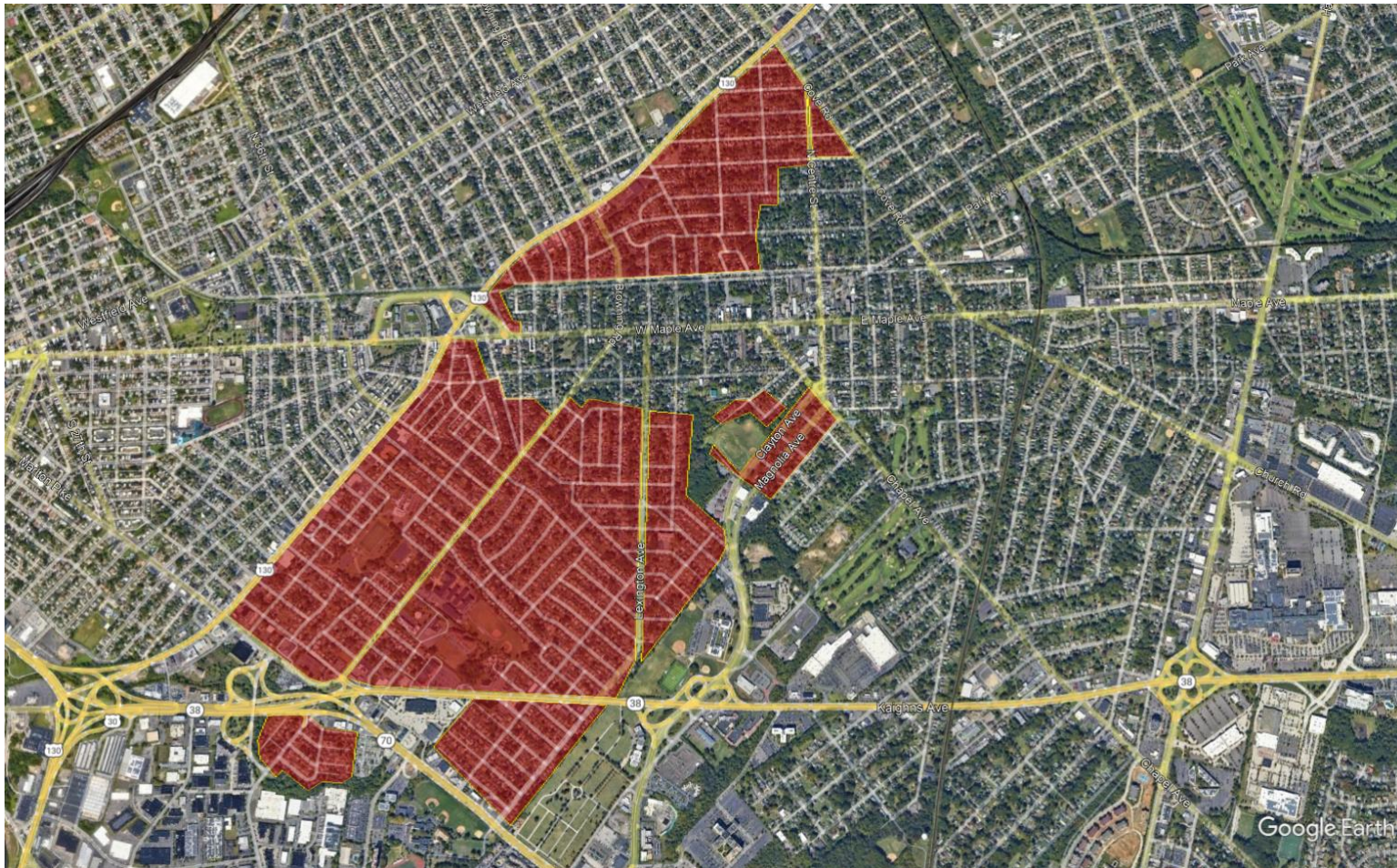


Blue Section:





Red Section:





Pennsauken
PUBLICWORKS
DEPARTMENT

Gold Section:

